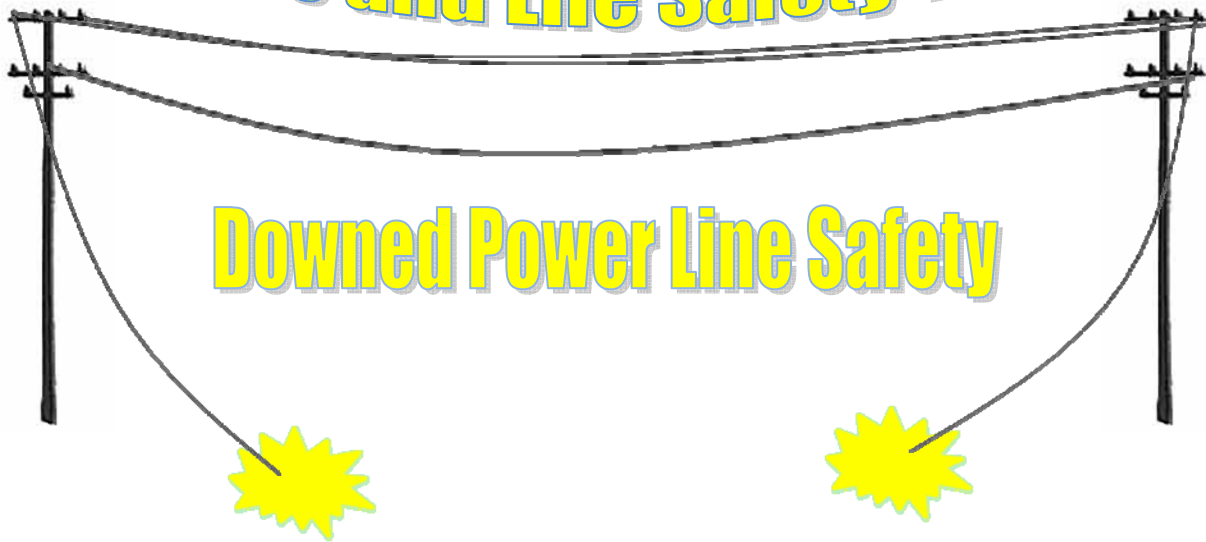


# March 2011 Fire and Life Safety Tip



With Spring approaching the likelihood of severe storms and high winds increase, and there is always the likelihood of downed power lines. These lines feed our everyday power to our homes. On any given day, they are a safe way to supply energy by overhead or underground transmission lines. However, when the wicked winds take down the power lines, that's when the real danger begins. There is the danger of electrocution, fires, and it also means that your power could be out for hours or even days.

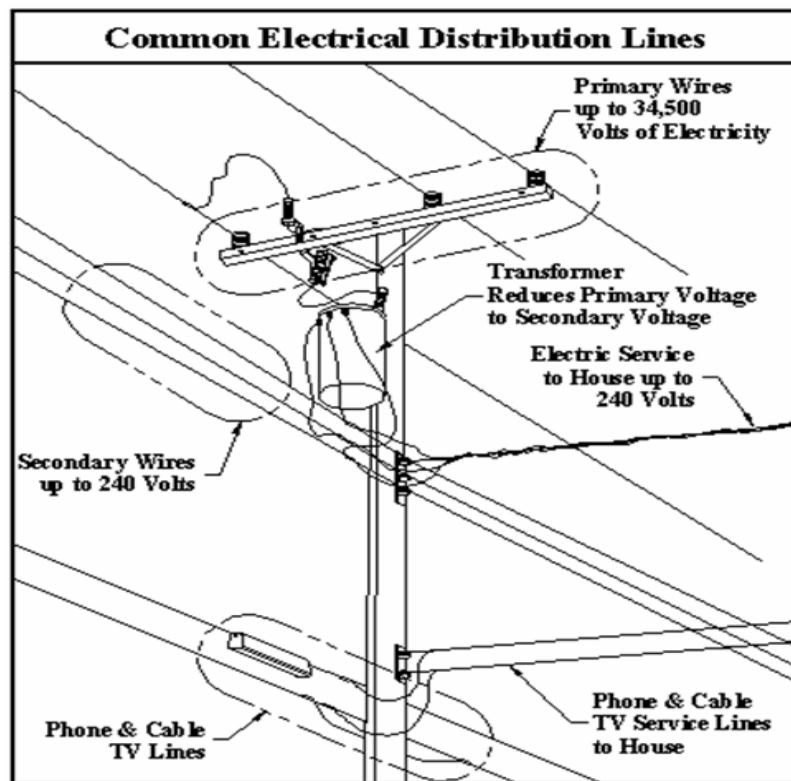
## Downed Power Lines

Be aware of hazards presented by downed power lines.

- Consider all wires **ENERGIZED** and dangerous. Even lines that are de-energized may become energized at any time.
- Stay at least 20 feet away from the wire.
- Electricity can travel through the ground. Therefore, a live wire touching the ground can harm you even if you don't touch the wire.
- Electricity can also travel through tree limbs. Never remove tree limbs or other items that are touching or near a downed wire.
- Never use **any** object to move a downed wire.
- If a broken power line should fall on your vehicle:
  - Stay inside the vehicle until help arrives, as your car may be energized.

- Warn others not to touch the vehicle and have them call for help.
- If you must leave the vehicle, jump as far away as possible with both feet landing on the ground at the same time. DO NOT touch the vehicle and the ground at the same time.
- If someone makes contact with a downed power line, do not try to rescue them because you risk becoming a victim yourself.
- **Call 911.** The 911 operator will be able to contact emergency services and the local power company to respond to the situation.

#### Common Electrical Distribution Line Components



References:

<http://electrical.about.com>

<https://www.firstenergycorp.com>